

Attention Boaters!

North Harbor Dredging Commencing October 2, 2017

Three areas of the north harbor will be dredged commencing October 2, 2017. To maximize production and efficiently return the shoaled areas at the turning basin, X-J channel and culvert area, and I-Dock area to design depths, crews will utilize the 16" hydraulic dredge *Twin Lakes* for a portion of the work. Crews will utilize the District's smaller, 8" dredge, *Squirt*, to perform the remainder of the work, once *Twin Lakes* is moved to the south harbor for entrance dredging (anticipated to start early-November). The maps below depict three general areas where dredging will be performed, and the anticipated pipeline configuration:

IMPORTANT INFORMATION:

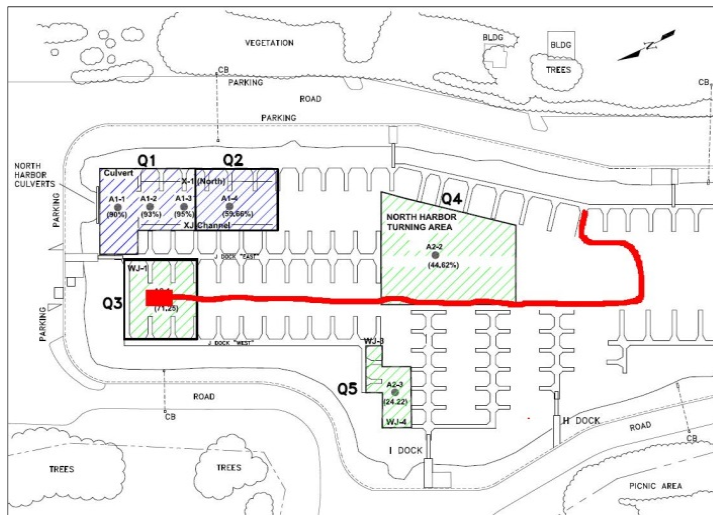
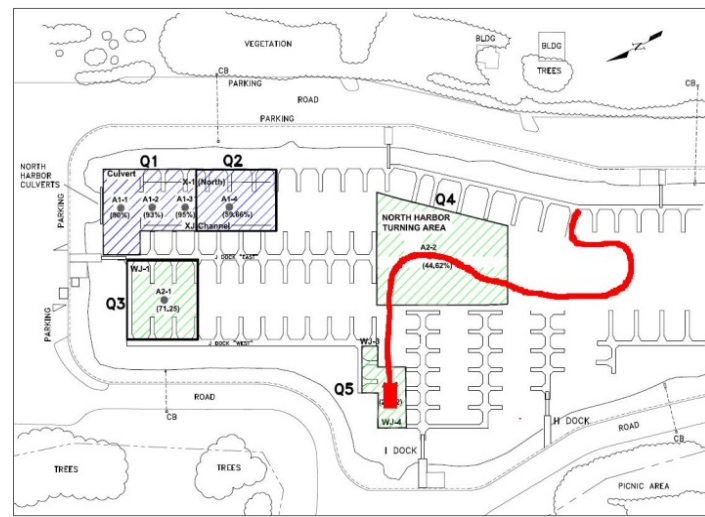
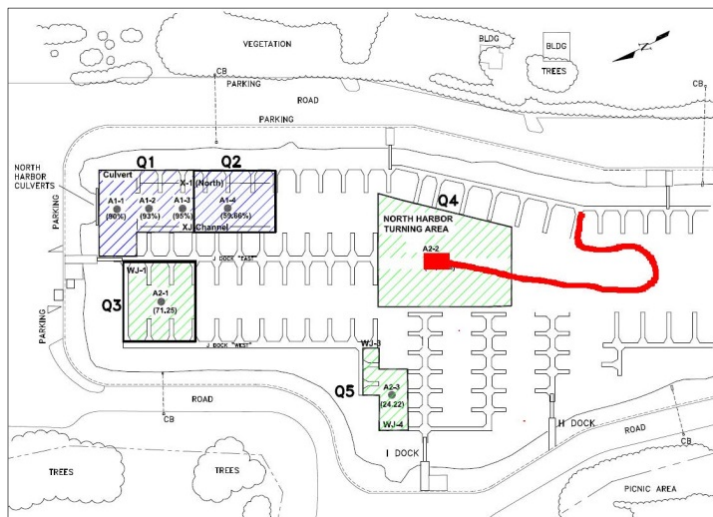
Mariners transiting the area between 9 AM and 4 PM should contact the dredge crew on VHF channel 8 for information about pipeline and equipment hazards prior to transit, or contact the Harbor Patrol at (831) 475-6161 or on VHF channel 9.

If you are transiting the area after regular office hours in the vicinity of the dredge equipment and pipeline and need assistance, please contact Harbor Patrol on VHF channel 9, or call 911 and request a deputy contact you.

Check our website for schedule updates:

www.santacruzharbor.org

Santa Cruz Port District
September 12, 2017



WARNING

A 10" diameter plastic pipeline may be on and just under the surface of the water at times. It is black and difficult to see, and can create an obstruction to navigation. Mariners should be observant of the pipeline and equipment hazards in the area and navigate slowly and cautiously. Access may be restricted at times.

If you hit any of the dredge equipment or pipeline, please contact Harbor Patrol IMMEDIATELY.