



In This Issue

[Announcements](#)

[National Safe Boating Week](#)

[Channel Navigation](#)

[Entrance Sounding](#)

[Free Workshop!](#)

[Commission Meeting Schedule](#)

[Fuel Prices](#)

NEWSLETTER

April 2016

ANNOUNCEMENTS

DREDGE DELIVERY & LAUNCH RAMP IMPACTS

Progress on construction of the Port District's new dredge (to be named *Twin Lakes*) continues. Testing of the new dredge commenced during the last week of April, with final testing taking place during the first week of May. Following final testing, the new dredge will be disassembled and loaded onto approximately 18 big rig trucks for delivery to Santa Cruz. The dredge will be offloaded and reassembled in the launch ramp area during late-May and early-June.

Staging and assembly of the new dredge will take place in the launch ramp area. Though crews will strive to keep half of the launch ramp accessible at all times during constructions, please be advised that **launch ramp activities and parking will be impacted from mid-May through June 2016. Boaters should expect intermittent launch ramp delays during this time.**

The District is looking forward to the arrival of its new dredge! Live video streaming of the launch ramp area will be available shortly to allow users the opportunity to check in on the dredge build process.

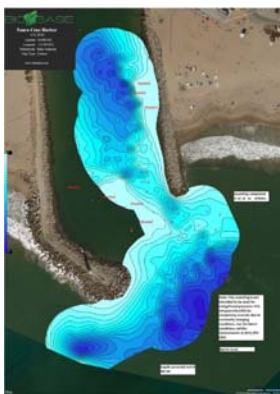
DREDGING

As of April 25, 2016, approximately 80,000 cubic yards of sand remains to be dredged from the entrance channel. Dredging is anticipated to continue through the month of May.

WATER TAXI OPERATION

The free inner-harbor water taxi is set to begin operation over Memorial Day Weekend! Beginning Saturday, May 28, 2016, the water taxi will be operating on weekends and holidays from 11 AM to 6 PM. In addition to weekend service, the water taxi will

ENTRANCE SOUNDING



[Download Current Entrance Sounding](#)

FREE AQUATIC INVASIVE SPECIES PREVENTION WORKSHOP

Workshop participants will gain an understanding of

the impacts aquatic invasive species (AIS) have on the environment; learn to recognize them in their region; learn how to take action and prevent spreading invasive species by inspecting and cleaning equipment and watercraft.

Thursday, May 19, 2016
8:45 am - 2:45 pm
Seymour Marine
Discovery Center
100 Shaffer Road,
Santa Cruz, CA

To register, contact Vivian Matuk at (415) 904-6905 or vmatuk@coastal.ca.gov

Registration deadline is
Friday, May 13, 2016

PORT COMMISSION MEETING SCHEDULE

MAY

Regular Public Session
 Tuesday, May 24 2016
 7 PM

JUNE

Regular Public Session
 Tuesday, June 28, 2016
 7 PM

CURRENT FUEL PRICING

Gasoline: \$2.85
 Diesel: \$2.38
 Commercial: \$2.28



Photo: S. Haan.

operate on Thursday evenings during the Crow's Nest's beach barbecues from 5 PM to 9:30 PM.

Passengers may be picked up and dropped off at the following locations:

- **X-1 gate**
- **AA-dock (Aldo's)**
- **Launch ramp**

NATIONAL SAFE BOATING WEEK

National Safe Boating Week is May 21-27, 2016. Join the Port District in promoting safe boating by taking part in a free vessel safety inspections offered by the Coast Guard Auxiliary.

Free Vessel Safety Inspections
Saturday, May 21, 2016
Santa Cruz Harbor Launch Ramp

For additional tips on boating safety and life jacket safety, visit the North American Safe Boating Campaign's [website](#).

CHANNEL NAVIGATION

In preparation for a busy boating season, Port District staff would like to remind boaters of the following rules governing vessel traffic within the harbor channel.

- The speed limit within the harbor is 5 MPH.
- Sailboats do not always have the right of way.
- Sailboats may tack across the channel, even if such tacking places the vessel in violation of the "keep-to-the-right" rule.
- When tacking across the harbor channel onto the side of the channel that places the sailboat in violation of the "keep-to-the-right" rule, sailboats shall yield to oncoming vessels so as not to cause an oncoming vessel to alter speed or course.
- All vessels crossing the main harbor channel, or leaving a fairway, shall yield to any vessel transiting the main channel.
- Paddlers must keep to the right at all times, and no more than two abreast.
- Human-powered watercraft is not allowed in the launch ramp area at any time. Please observe the signs!
- Swimming and prone paddling in the harbor is prohibited.

While on the water, please observe these "rules of the road" and have a safe and enjoyable boating season!

Santa Cruz Port District | | scpd@santacruzharbor.org | <http://www.santacruzharbor.org>
135 5th Avenue
Santa Cruz, CA 95062
(831) 475-6161

Copyright © 2012. All Rights Reserved.

Santa Cruz Port District, 135 5th Avenue, Santa Cruz, CA 95062

[SafeUnsubscribe™ {recipient's email}](#)

[Forward this email](#) | [Update Profile](#) | [About our service provider](#)

Sent by scpd@santacruzharbor.org in collaboration with



Try it free today