

# Attention Boaters!

## North Harbor Dredging Update – 2019/20 Season

Dredging of the north harbor is scheduled to begin on October 1, 2019, using the Port District's 8" dredge *Squirt*. The dredging permit window ends on February 28, 2020, for fine-grained material (Quadrants 2, 3, and 4), and continues through April 30, 2020, for sandy material (Quadrant 1). The maps below depict four general areas where dredging will be performed, and the anticipated pipeline configuration.

### IMPORTANT INFORMATION:

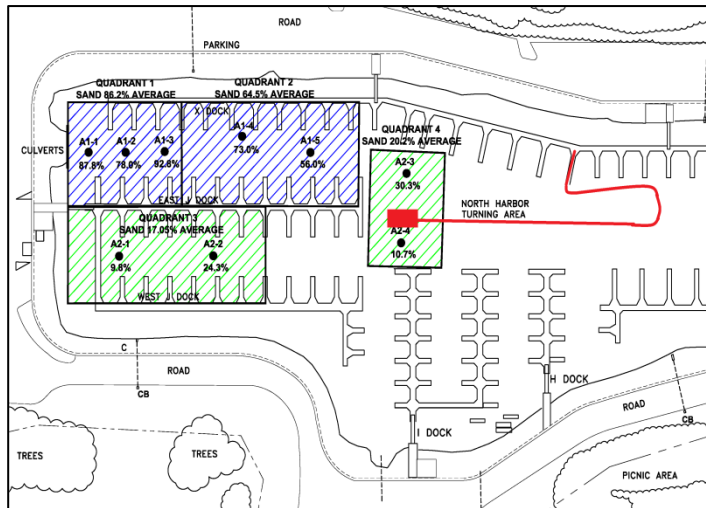
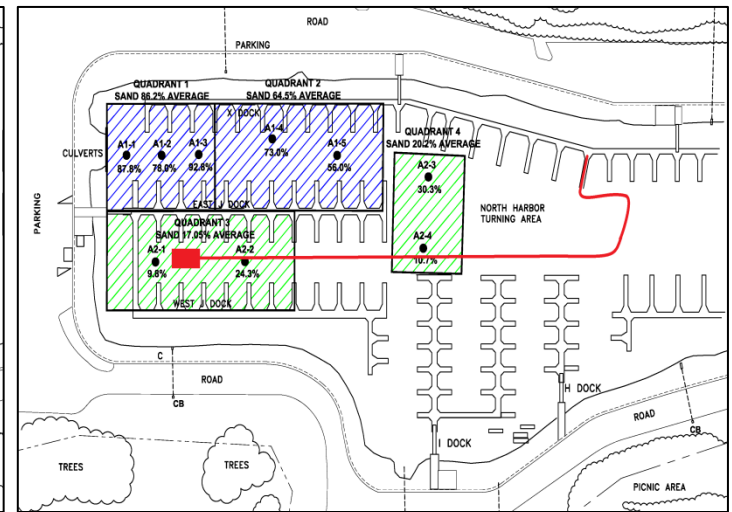
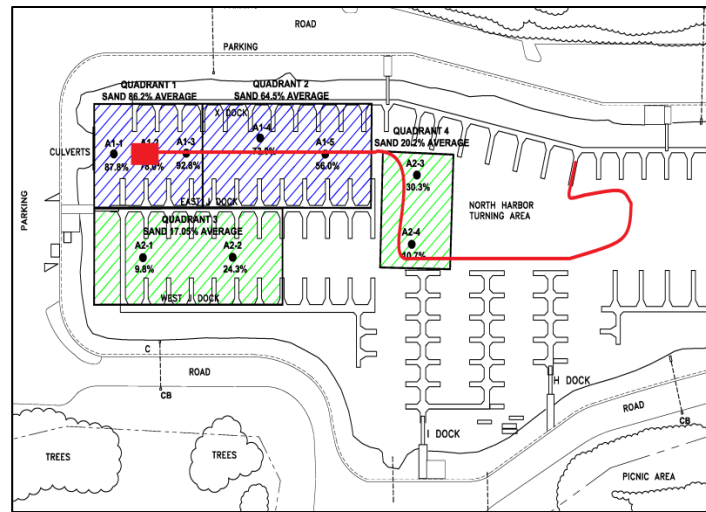
Mariners transiting the area between 9 AM and 4 PM should contact the dredge crew on VHF channel 8 for information about pipeline and equipment hazards prior to transit, or contact the Harbor Patrol at (831) 475-6161 or on VHF channel 9.

If you are transiting the area after regular office hours in the vicinity of the dredge equipment and pipeline and need assistance, please contact Harbor Patrol on VHF channel 9, or call 911 and request a deputy contact you.

Check our website for schedule updates:

[www.santacruzharbor.org](http://www.santacruzharbor.org)

Santa Cruz Port District  
October 1, 2019



### WARNING

A 10" diameter plastic pipeline may be on and just under the surface of the water at times. It is black and difficult to see, and can create an obstruction to navigation. Mariners should be observant of the pipeline and equipment hazards in the area and navigate slowly and cautiously. Access may be restricted at times.

If you hit any of the dredge equipment or pipeline, please contact Harbor Patrol IMMEDIATELY.